

**Tax Map  
38  
HERMON  
MAINE**



**LEGEND**

- PROPERTY LINE
- EASEMENT
- PUBLIC RIGHT-OF-WAY
- PRIVATE RIGHT-OF-WAY
- RAILROAD RIGHT-OF-WAY
- PARCEL HOOK
- STREET NUMBER
- PARCEL NUMBER
- ACCOUNT NUMBER
- SURVEY DIMENSION (FT)
- WETLAND
- HYDROLOGY

This map is prepared for the inventory of real property within the Town of Hermon and is compiled from recorded deeds, plats, tax maps, surveys, planimetric maps, and other public records and data. Users of this tax map are hereby notified that the aforementioned public primary information sources should be consulted for verification of the information contained on this map. The Town of Hermon and its mapping contractors assume no legal responsibility for the information contained herein.

SCALE: 1 in = 200 ft



		58	59	60	61	
52	53	54	55	56	57	
45	46	47	48	49	50	51
38	39	40	41	42	43	44
31	32	33	34	35	36	37
24	25	26	27	28	29	30
17	18	19	20	21	22	23
10	11	12	13	14	15	16
4	5	6	7	8	9	
	1	2	3			

Map Index

Print Date: 1/25/2018

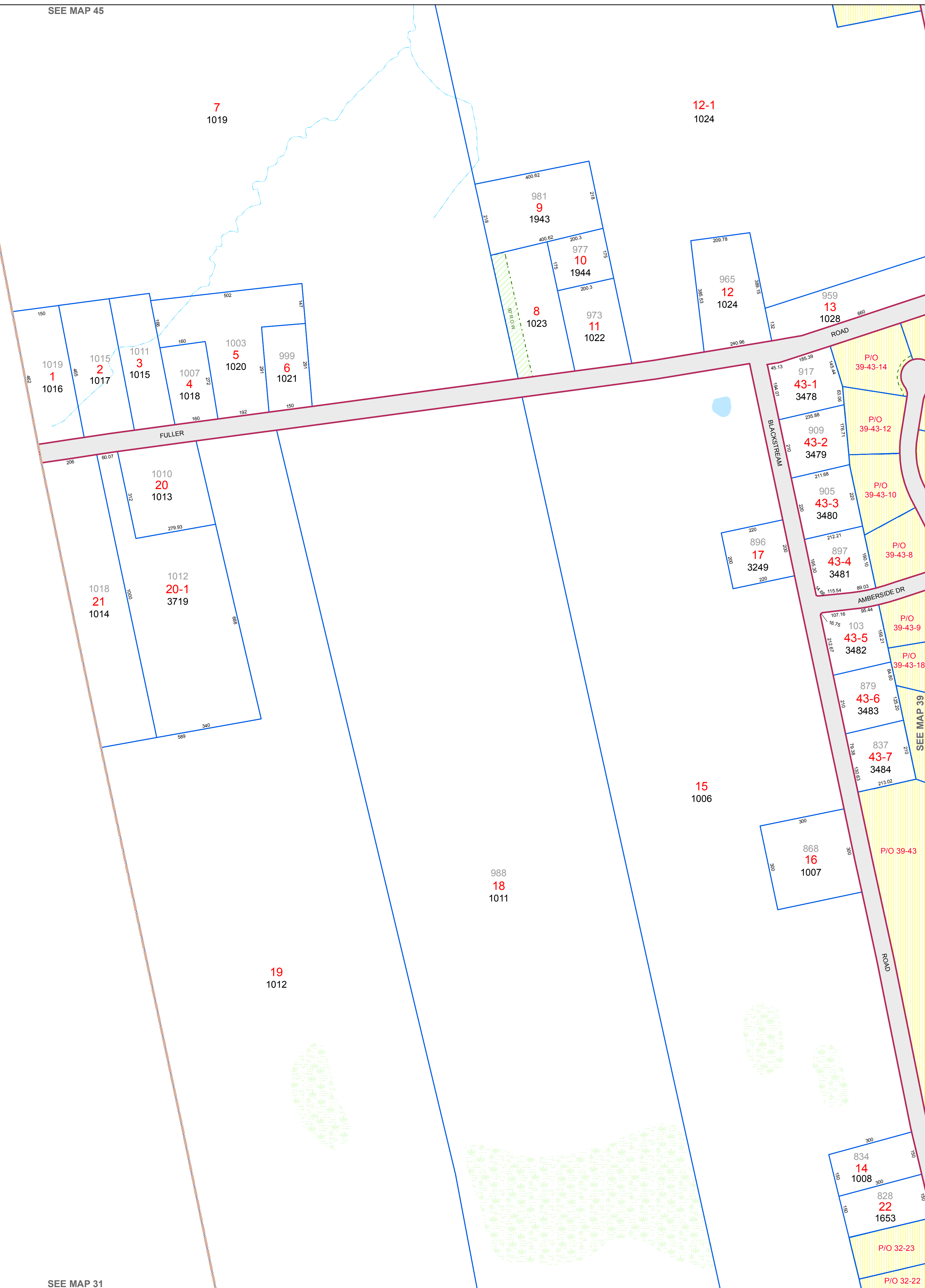
Hermon Assessor's Office  
333 Billings Road  
Hermon, ME 04401  
(207) 848-1049

CARMEL

SEE MAP 45

SEE MAP 31

SEE MAP 39



7  
1019

12-1  
1024

1019 1  
1016  
1015 2  
1017  
1011 3  
1015  
1007 4  
1018  
1003 5  
1020  
999 6  
1021

981 9  
1943  
977 10  
1944  
973 11  
1022  
8 1023

965 12  
1024  
959 13  
1028

917 43-1  
3478  
909 43-2  
3479  
905 43-3  
3480  
897 43-4  
3481  
896 17  
3249  
897 43-4  
3481  
879 43-6  
3483  
837 43-7  
3484  
868 16  
1007

1010 20  
1013  
1018 21  
1014  
1012 20-1  
3719

988 18  
1011

19  
1012

15  
1006

834 14  
1008  
828 22  
1653  
P/O 32-23  
P/O 32-22