

**Tax Map
48
HERMON
MAINE**

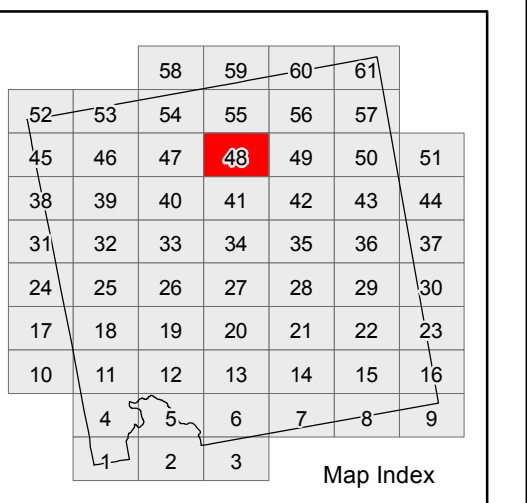


LEGEND

- PROPERTY LINE
- EASEMENT
- PUBLIC RIGHT-OF-WAY
- PRIVATE RIGHT-OF-WAY
- RAILROAD RIGHT-OF-WAY
- PARCEL HOOK
- STREET NUMBER
- PARCEL NUMBER
- ACCOUNT NUMBER
- SURVEY DIMENSION (FT)
- WETLAND
- HYDROLOGY

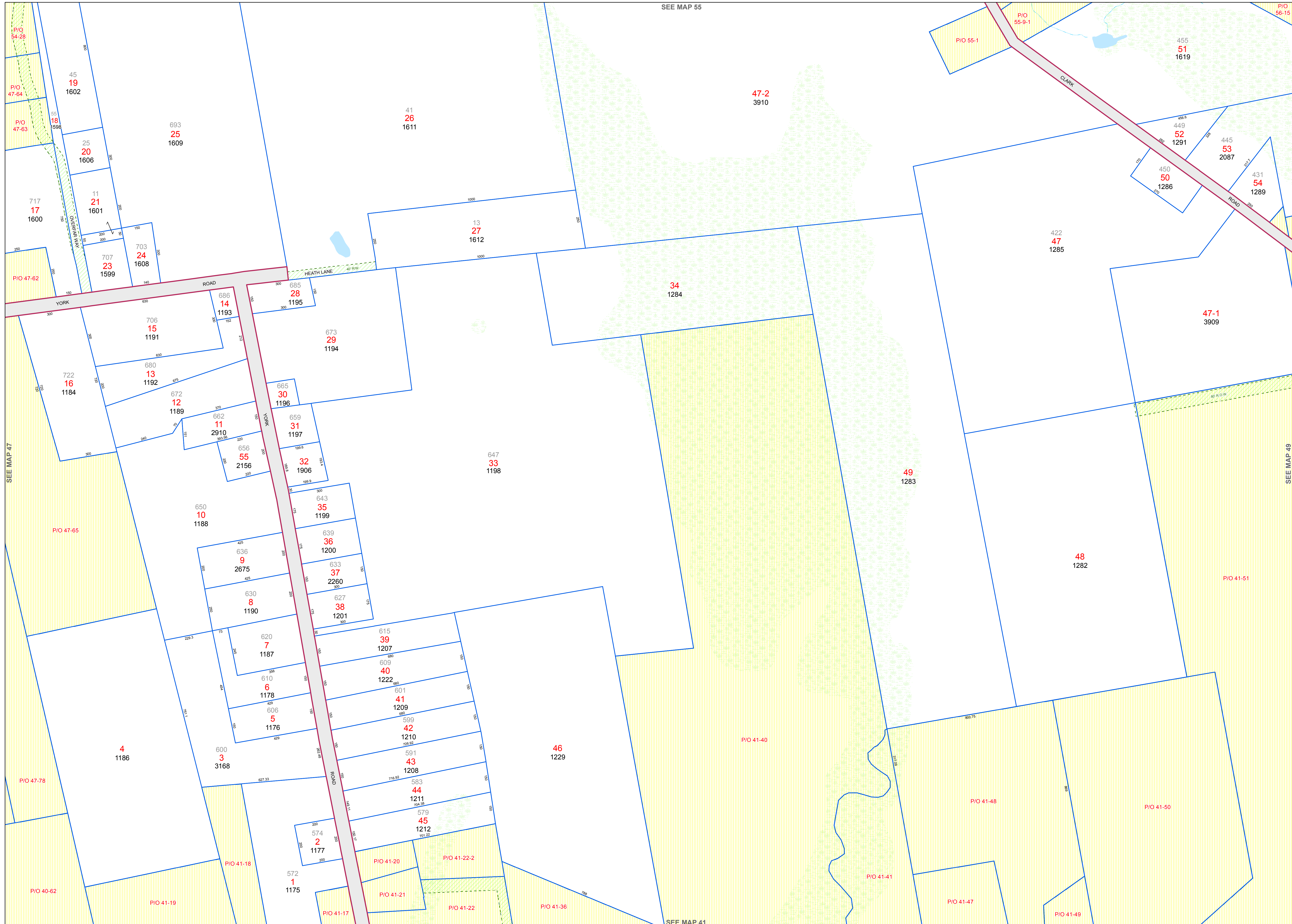
This map is prepared for the inventory of real property within the Town of Hermon and is compiled from recorded deeds, plats, tax maps, surveys, planimetric maps, and other public records and data. Users of this tax map are hereby notified that the aforementioned public primary information sources should be consulted for verification of the information contained on this map. The Town of Hermon and its mapping contractors assume no legal responsibility for the information contained herein.

SCALE: 1 in = 200 ft



Print Date: 1/23/2018

Hermon Assessor's Office
333 Billings Road
Hermon, ME 04401
(207) 848-1049



SEE MAP 55

P/O 56-15

P/O 55-1

P/O 55-9-1

455
51
1619

47-2
3910

41
26
1611

693
25
1609

45
19
1602

P/O 47-64

P/O 47-63

55
18
1598

25
20
1606

11
21
1601

703
24
1608

707
23
1599

P/O 47-62

717
17
1600

13
27
1612

34
1284

422
47
1285

449
52
1291

445
53
2087

450
50
1286

431
54
1289

47-1
3909

SEE MAP 47

P/O 47-65

722
16
1184

680
13
1192

672
12
1189

662
11
2910

656
55
2156

659
31
1197

655
30
1196

686
14
1193

673
29
1194

647
33
1198

49
1283

48
1282

P/O 41-51

P/O 47-78

4
1186

650
10
1188

636
9
2675

633
37
2260

643
35
1199

639
36
1200

627
38
1201

630
8
1190

620
7
1187

609
40
1222

615
39
1207

601
41
1209

599
42
1210

606
5
1176

591
43
1208

583
44
1211

600
3
3168

574
2
1177

579
45
1212

46
1229

P/O 41-40

P/O 41-48

P/O 41-50

SEE MAP 41

P/O 41-17

P/O 41-20

P/O 41-22-2

P/O 41-21

P/O 41-22

P/O 41-36

P/O 41-41

P/O 41-47

P/O 41-49